

POLICY BROOK ESTATES

34 Pleasant Street
Salem, New Hampshire 03079

Policy Brook Estates has been designed with a discriminating person in mind. That is why the utmost care has been taken to ensure your complete happiness. Our goal is to provide the best in quality, convenience and lifestyle at a cost that will leave you smiling.

QUALITY

Policy Brook Estates upholds the New England tradition of fine craftsmanship and exemplifies what apartment living should be....a place you can be proud to call home.

LUXURY

Live life to the fullest. Policy Brook Estates provides you with elegant surroundings and many amenities. A fully applianced kitchen, open concept design, security system, central stereo, cable TV and private washer and dryer are only some of the fine qualities you'll enjoy.



VISIT US AT MESITIREALESTATE.COM

FOLLOW US ON 

ADDITIONAL INFORMATION

RENT	Starting at: \$900 – per month for one-bedroom apartment. 900 square feet. \$1000 – per month for two-bedroom apartment. 1000 square feet. Includes secure storage unit.
PETS	Only one cat with an additional fee of \$35 per month. Absolutely NO dogs.
LEASES	One year minimum.
REQUIRED DEPOSITS	Security deposit is equivalent to one month's rent.
APPLIANCES	GE appliances consisting of gas range, self-defrosting refrigerator, microwave, dishwasher, sink disposal and stacked washer/dryer.
TELEPHONE & CABLE	Two to three telephone jacks – one in the kitchen and in each bedroom. Two to three cable outlets – one in the living room and in each bedroom.
UTILITIES	Tenant responsible for all utilities including water and sewer.
OTHER	Each suite is equipped with its own individual security system, central air-conditioning and central stereo system.

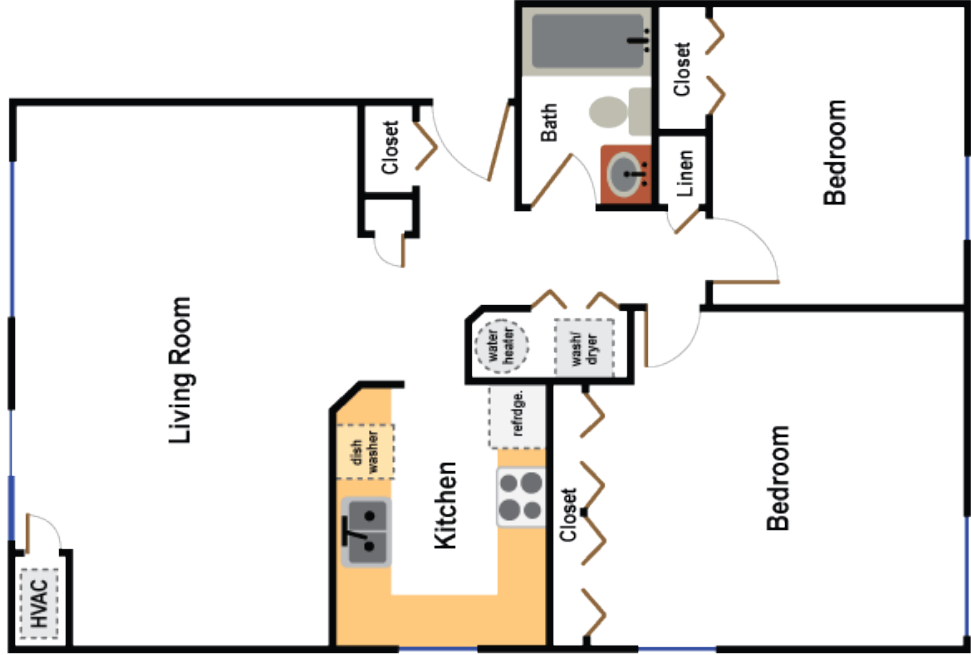
A COMMUNITY OF

Mesiti  REAL ESTATE INC.

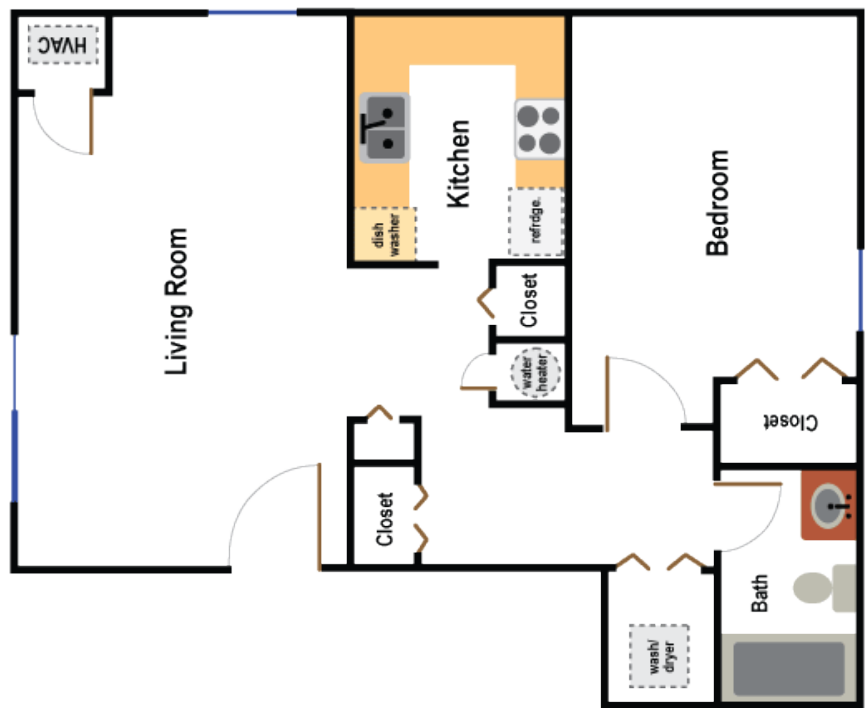
99 CLINTON STREET • CONCORD, NEW HAMPSHIRE • 03301
TEL. (603) 224-2268 • FAX: (603) 224-8986
WWW.MESITIREALESTATE.COM

POLICY BROOK ESTATES

34 Pleasant Street
Salem, New Hampshire 03079



Two Bedroom/One Bath
1000 sq. ft.



One Bedroom/One Bath
900 sq. ft.